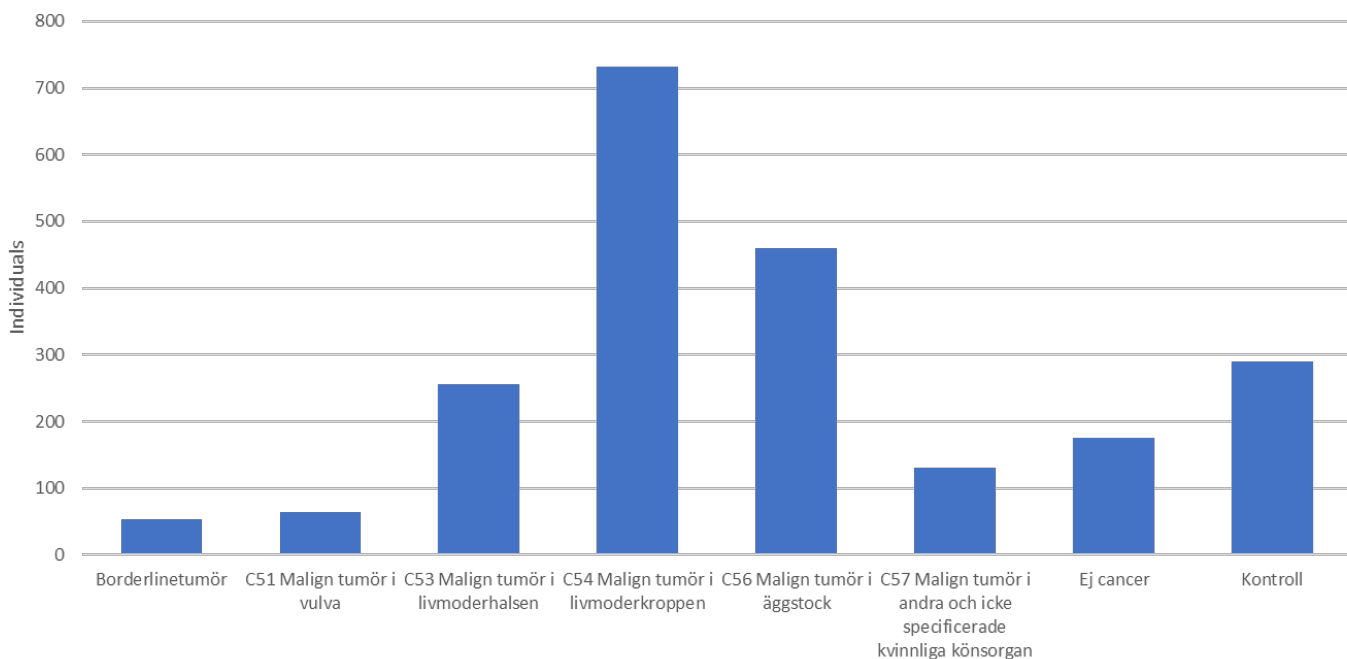


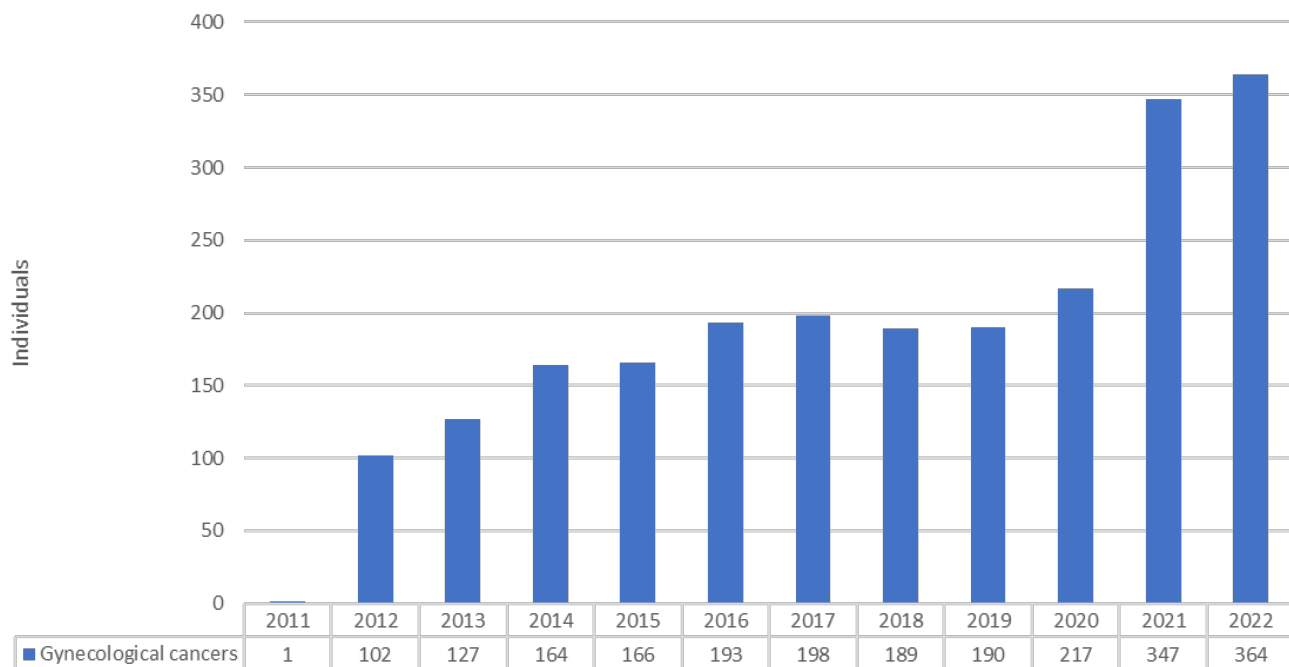
# GYNECOLOGICAL CANCER U-CAN STATISTICS 2011-2022

Individuals per diagnosis (>50 individuals)

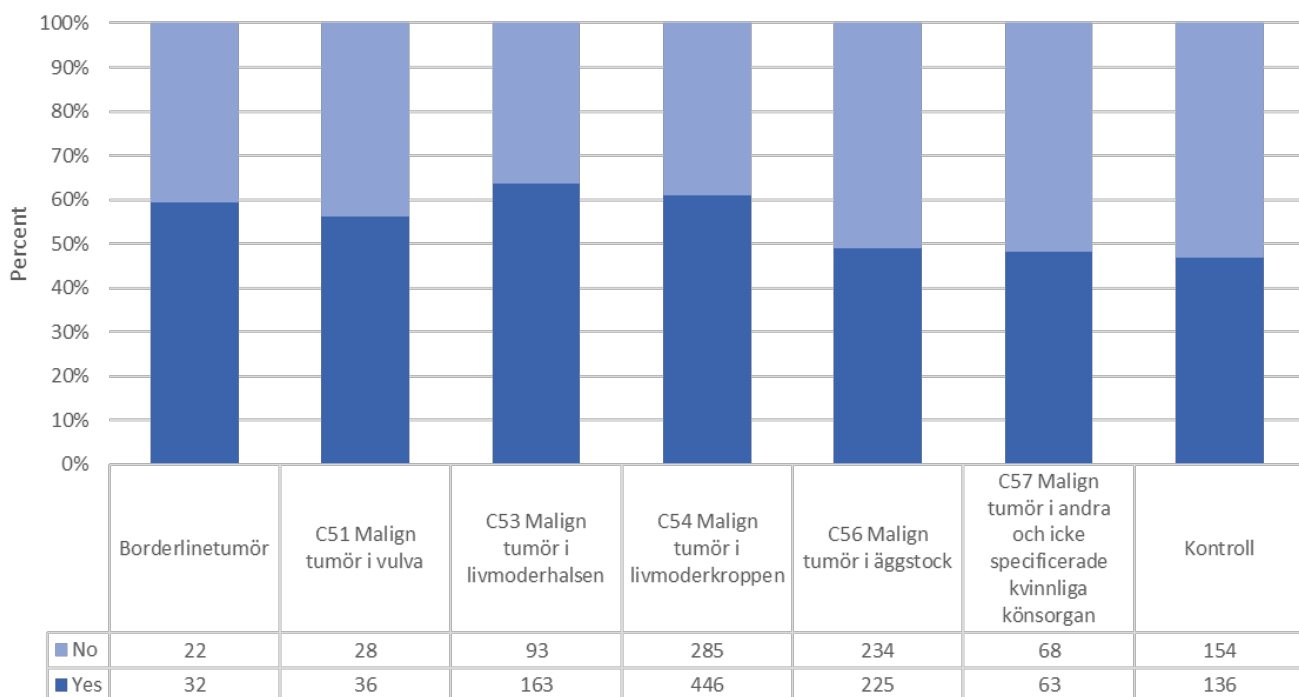


Row Labels	FEMALE	Grand Total
Borderlinetumör	54	54
C51 Malign tumör i vulva	64	64
C52 Malign tumör i vagina	10	10
C53 Malign tumör i livmoderhalsen	256	256
C54 Malign tumör i livmoderkroppen	731	731
C55 Malign tumör i livmodern med icke specificerad lokalisat	9	9
C56 Malign tumör i äggstock	459	459
C57 Malign tumör i andra och icke specificerade kvinnliga könsorgan	131	131
Cancer in situ (CIS)	2	2
Ej cancer	176	176
Kontroll	290	290
<b>Grand Total</b>	<b>2182</b>	<b>2182</b>

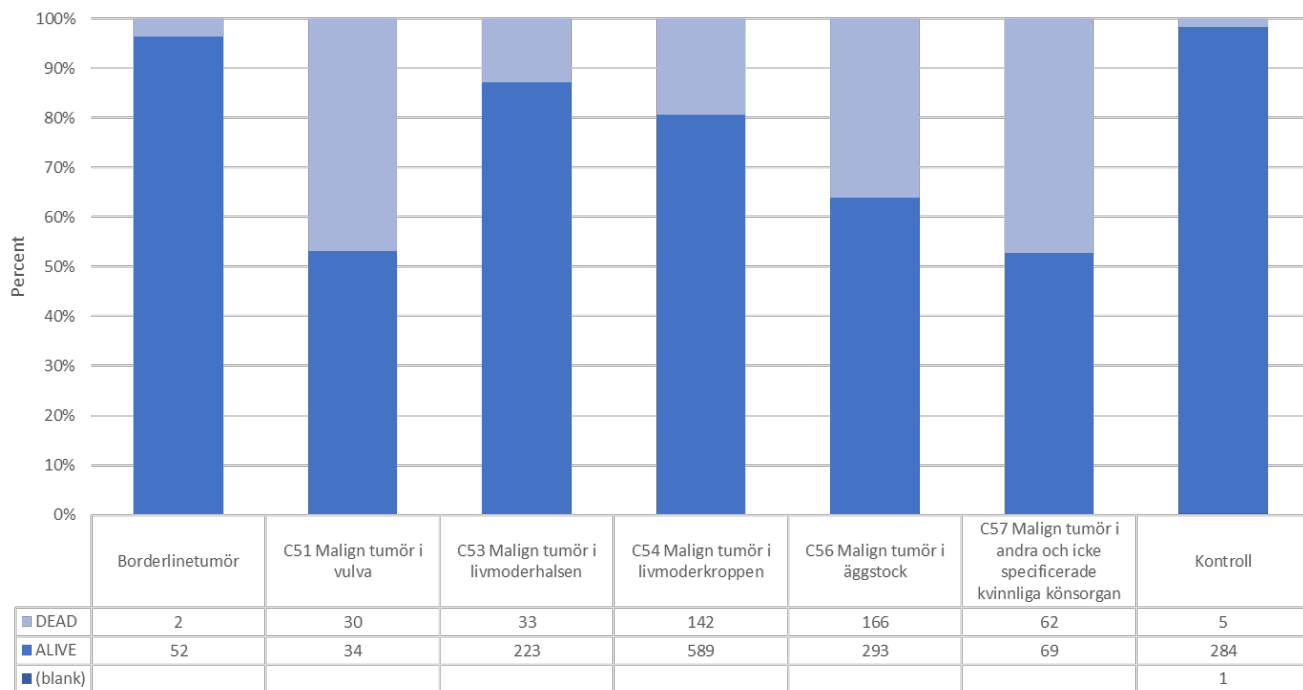
Included individuals per year



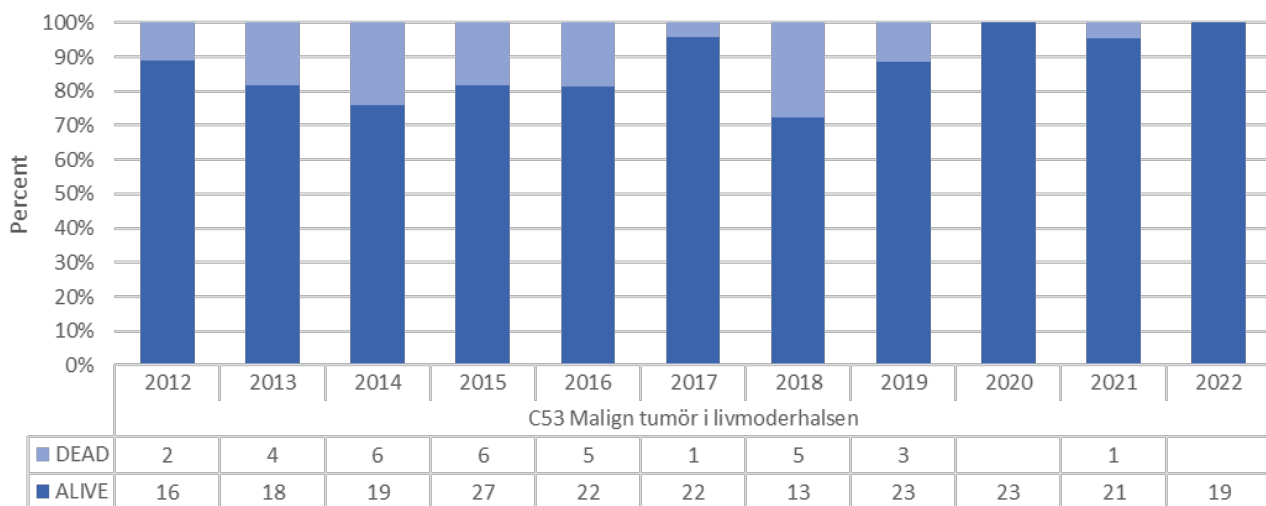
Percent of individuals that answered survey, per diagnosis



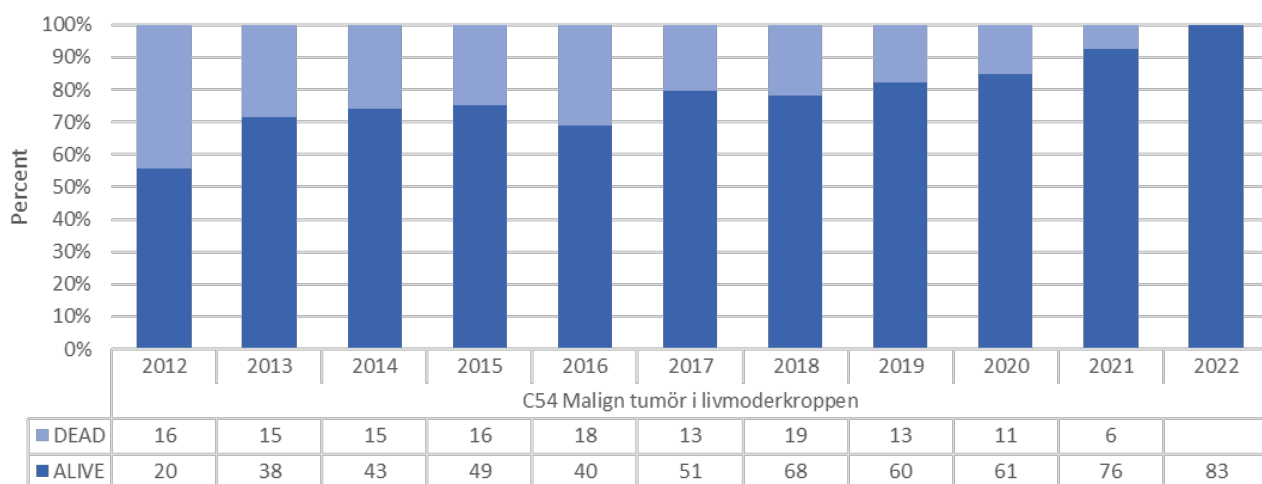
Percent alive or dead per diagnosis



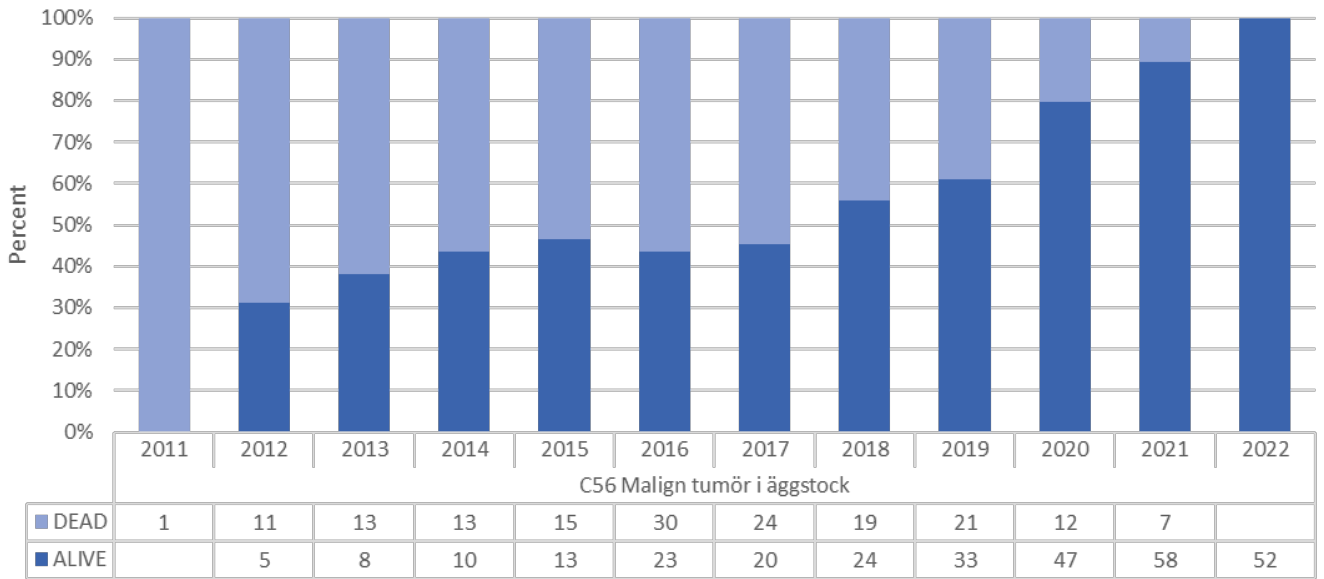
Percent alive or dead, per year of diagnosis (cervical cancer)



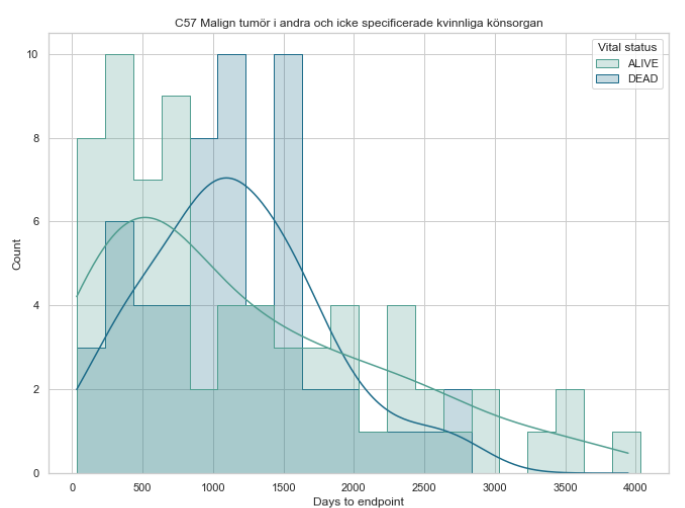
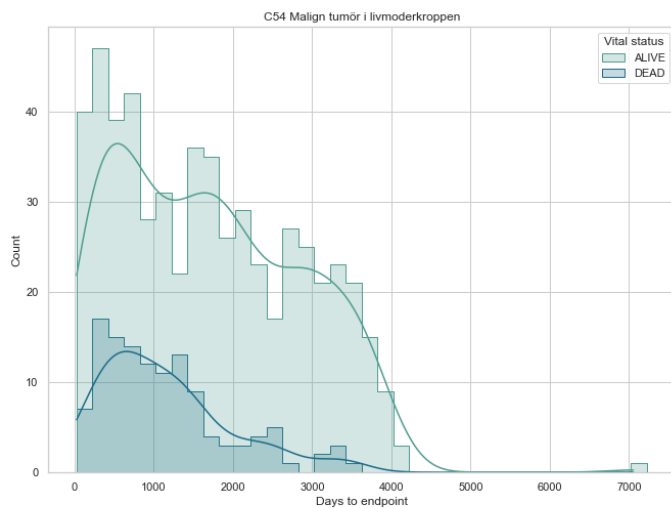
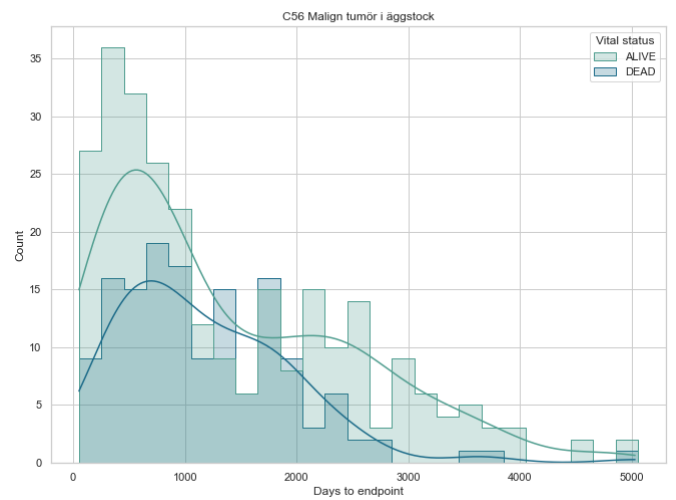
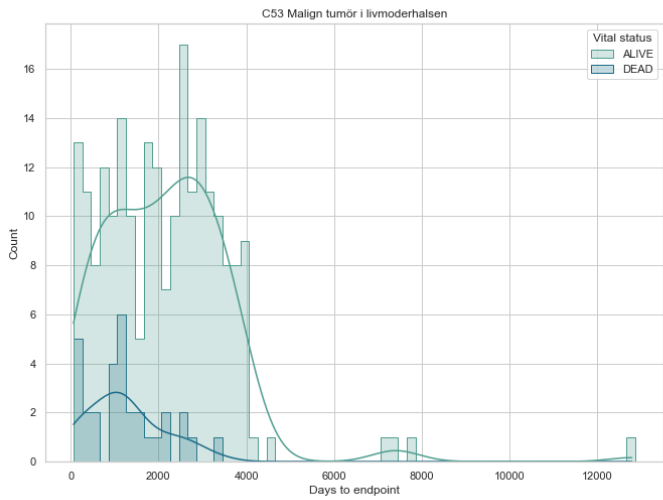
Percent alive or dead, per year of diagnosis (uterus cancer)



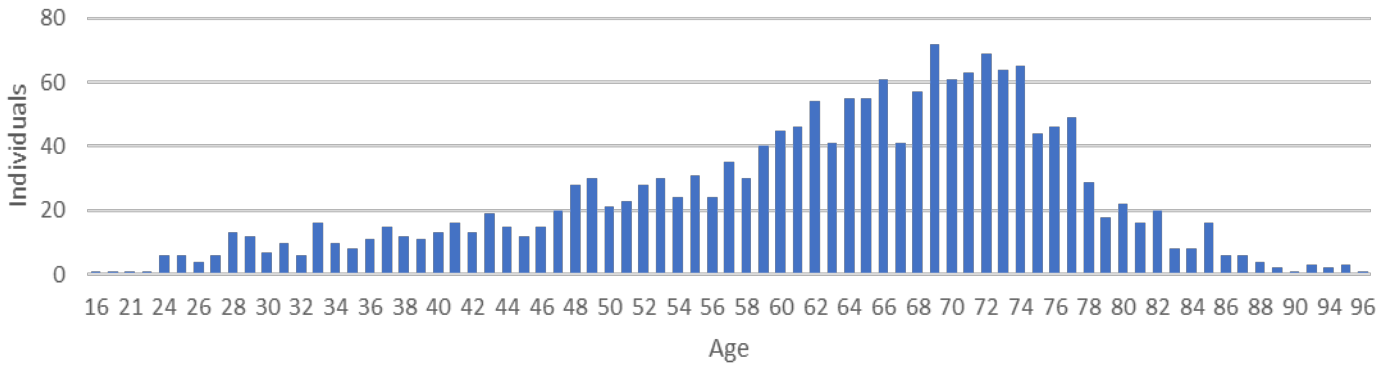
## Percent alive or dead, per year of diagnosis (ovarian cancer)



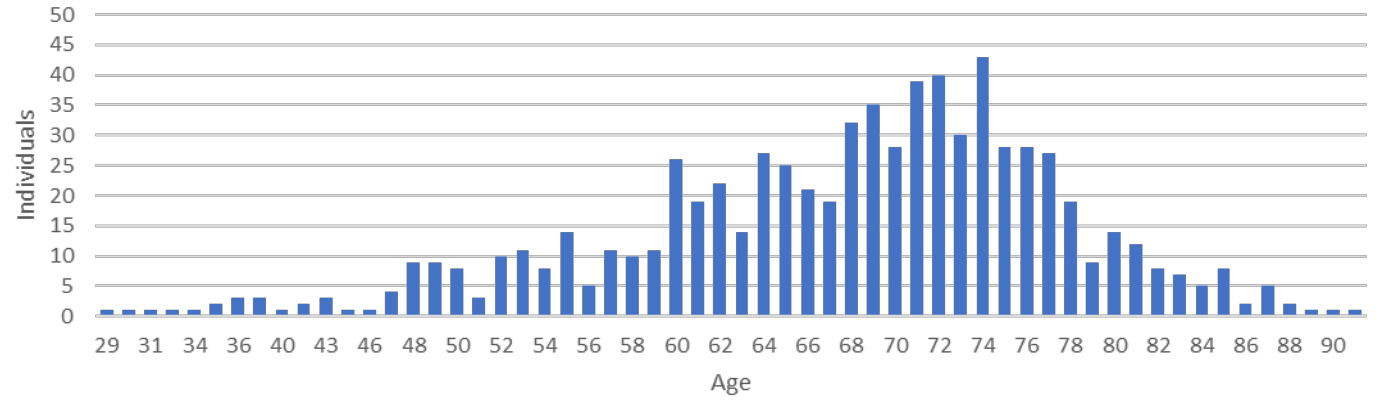
## Days from diagnosis to endpoint (death or 2022-12-31)



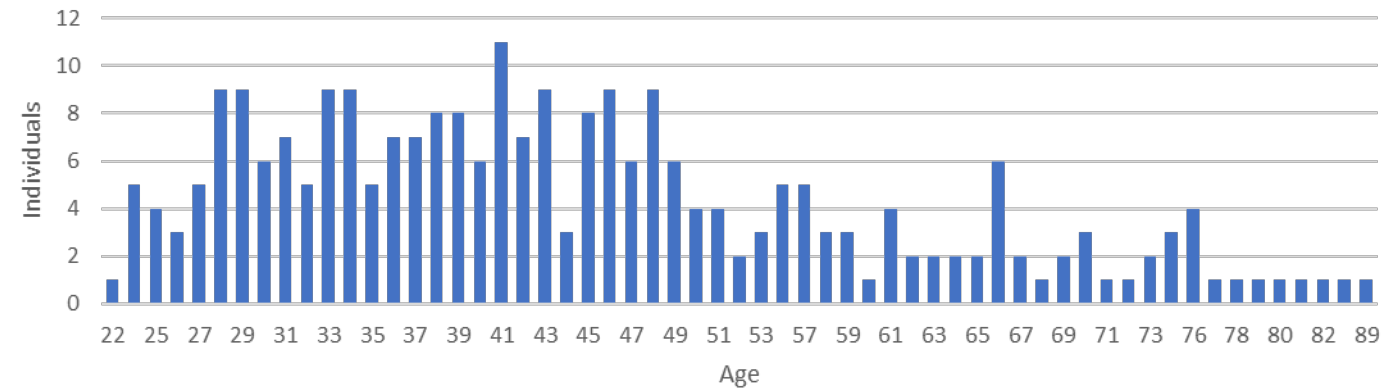
Distribution of age at diagnosis (All gynecological cancers)



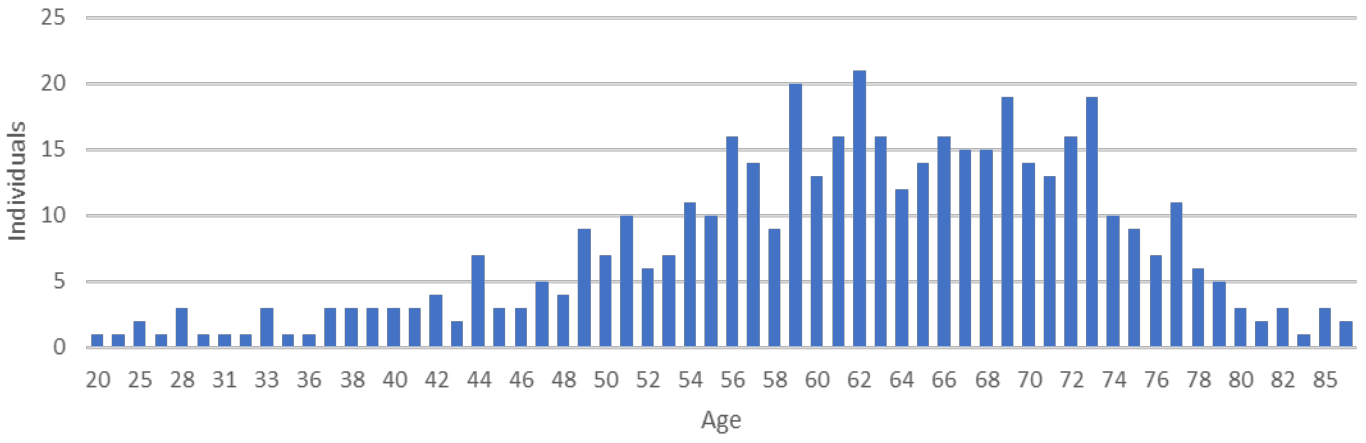
Distribution of age at diagnosis (uterus cancer)



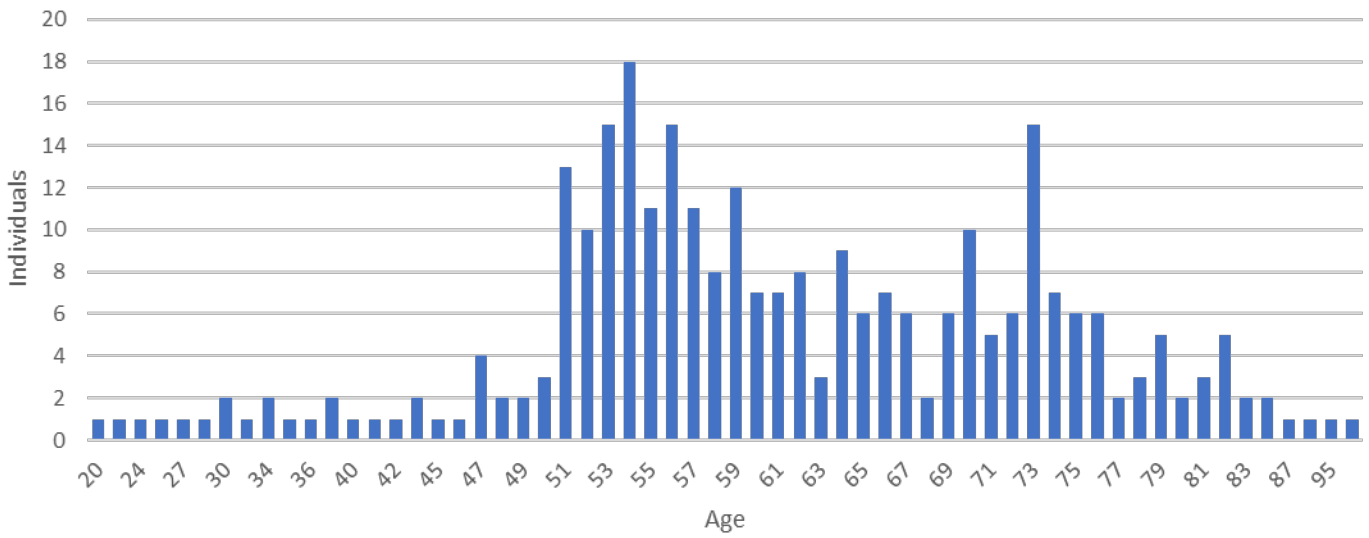
Distribution of age at diagnosis (cervical cancer)



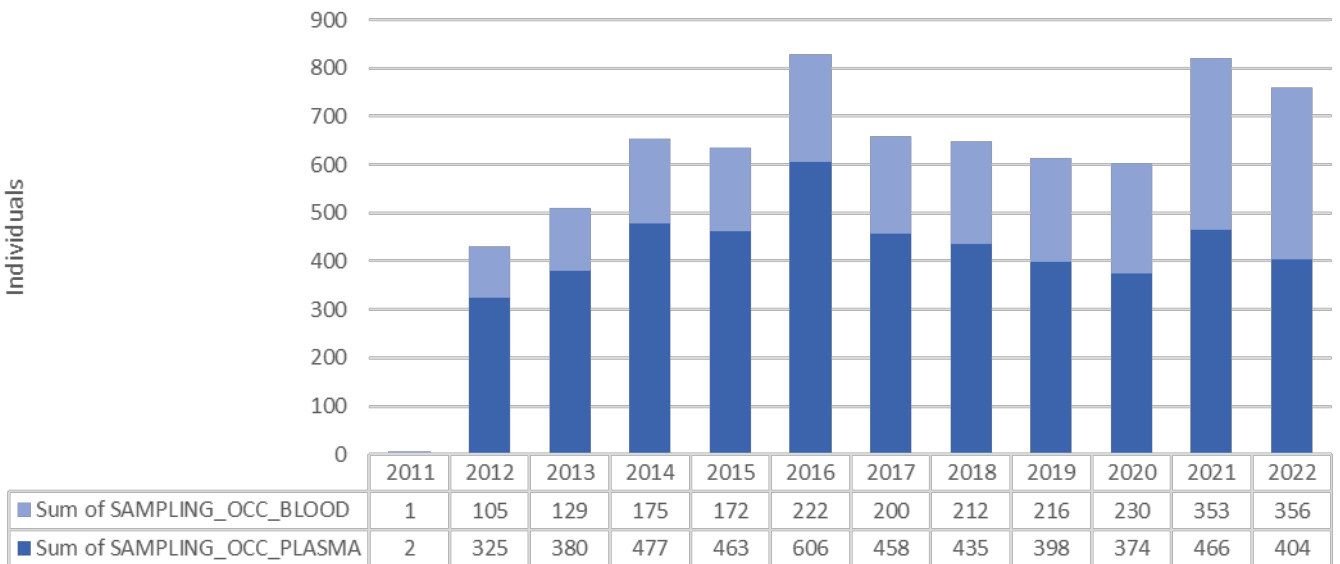
### Distribution of age at diagnosis (ovarian cancer)



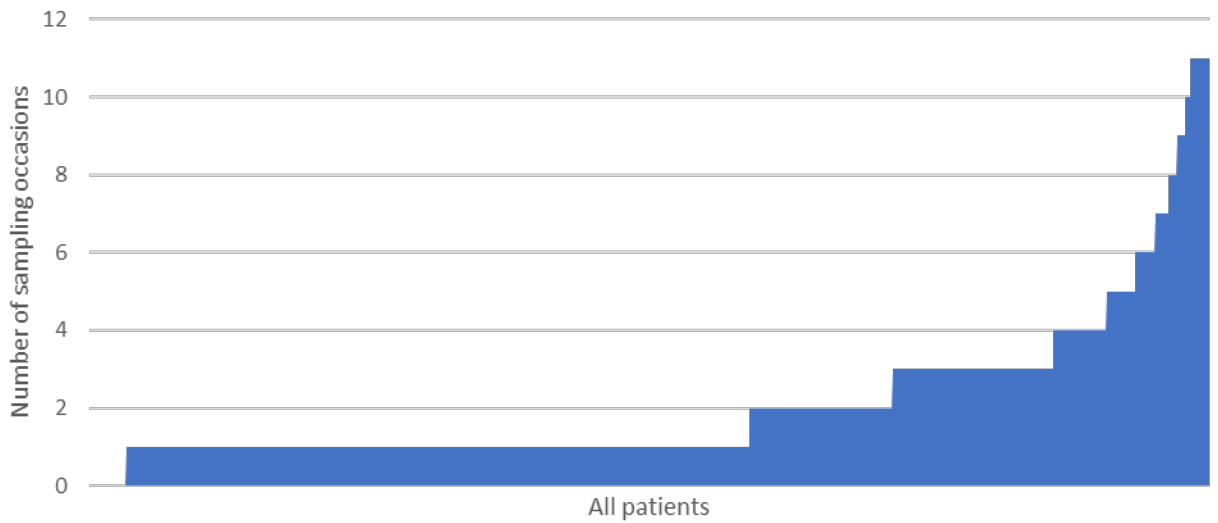
### Distribution of age at diagnosis (control cases)



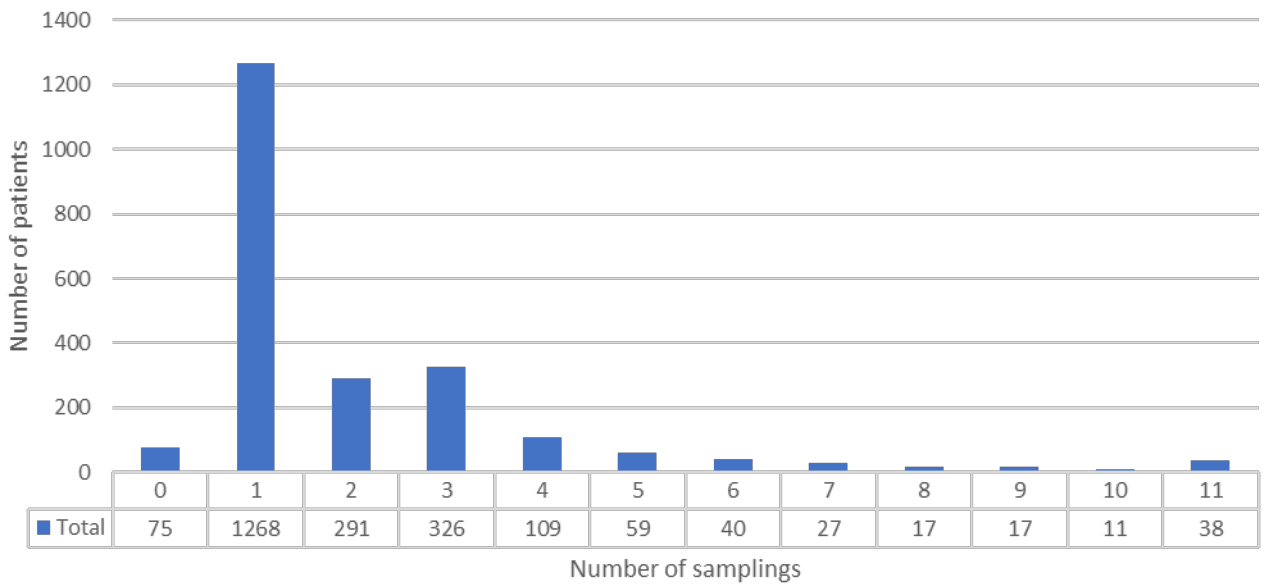
### Sampling occasions per year of plasma and whole blood



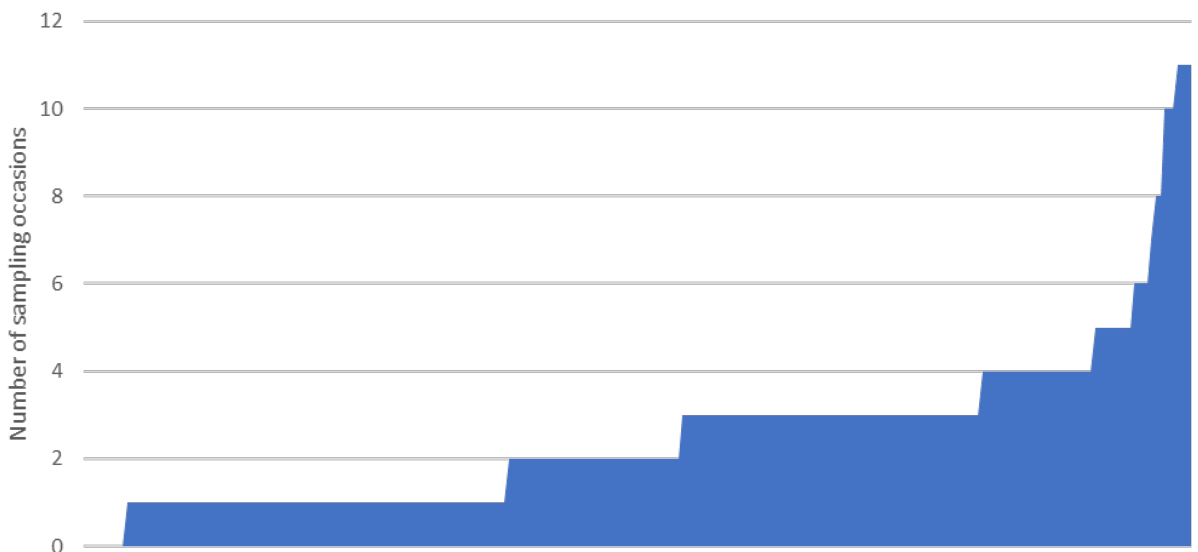
### Sampling occasions (up to 11)



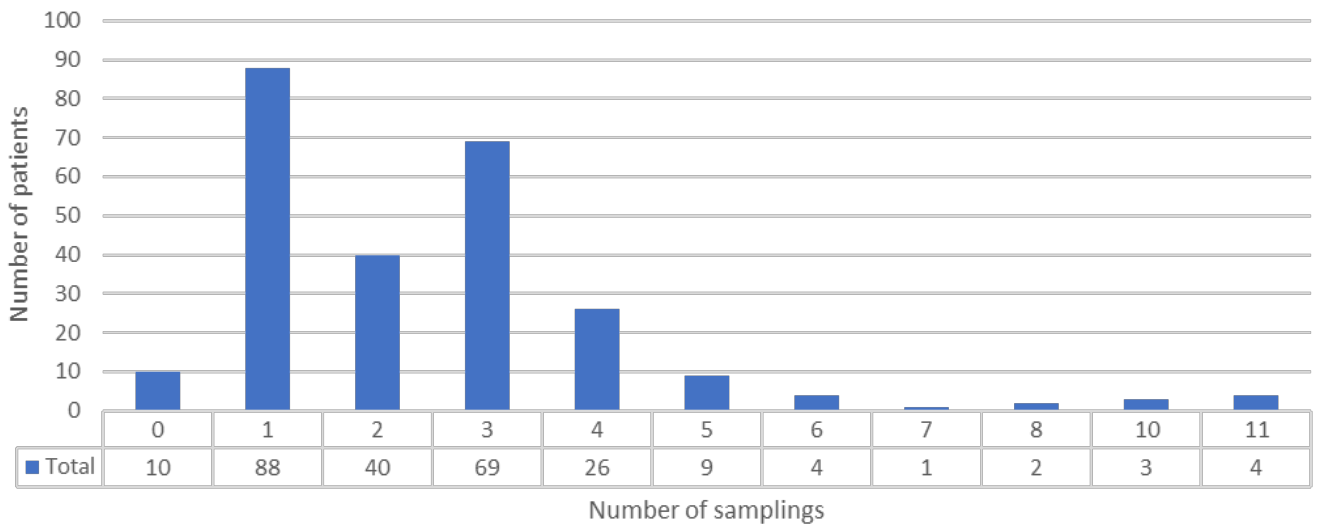
### Patients with different number of sampling occasions (up to 11)



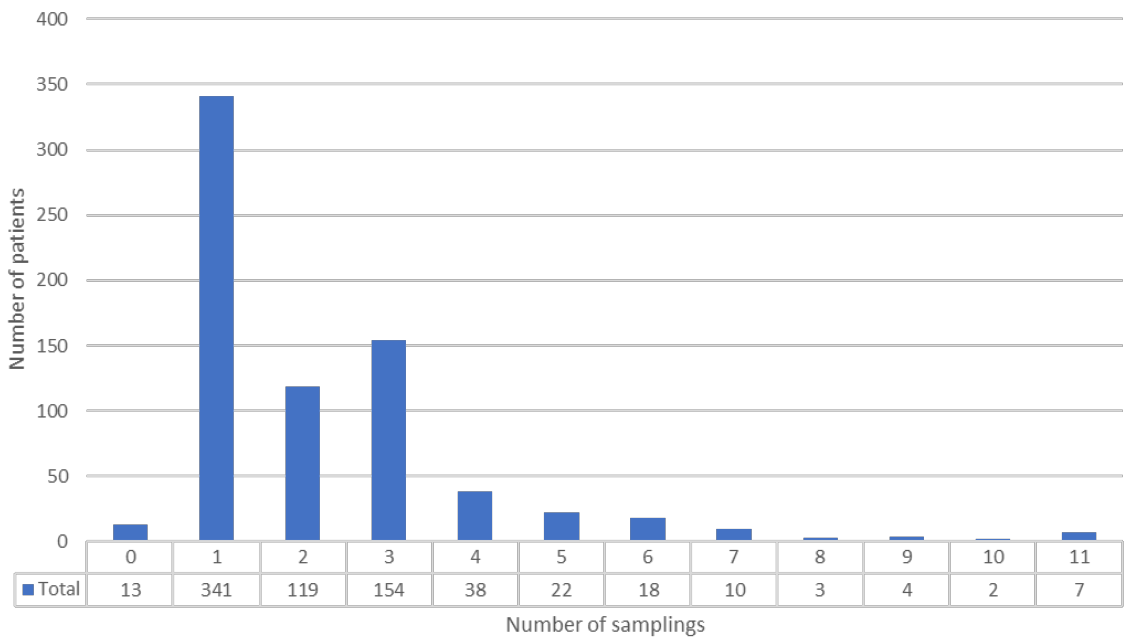
### Sampling occasions (up to 11), cervical cancer



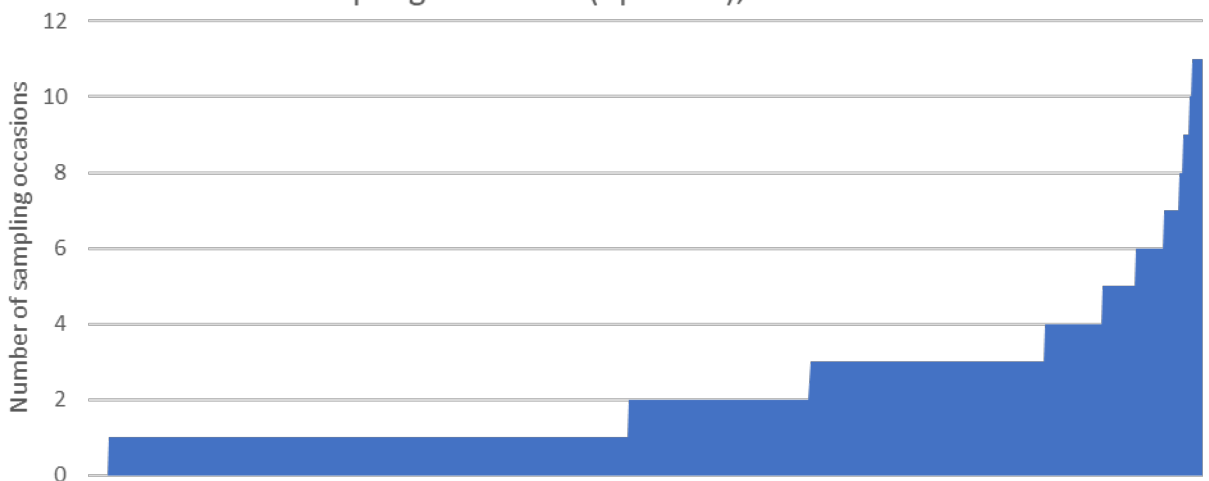
Patients with different number of sampling occasions (up to 11),  
Cervical cancer



Patients with different number of sampling occasions (up to 11),  
Uterine cancer

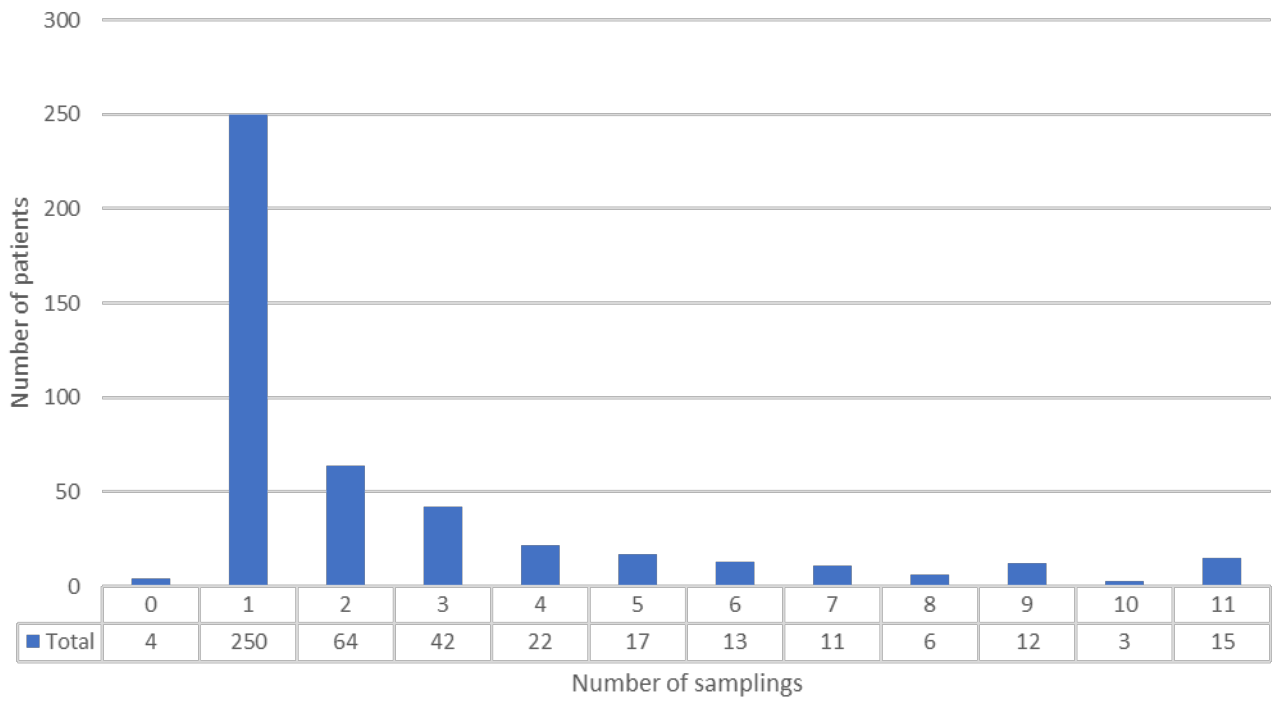


Sampling occasions (up to 11), uterine cancer





### Patients with different number of sampling occasions (up to 11), Ovarian cancer



### Sampling occasions (up to 11), ovarian cancer

